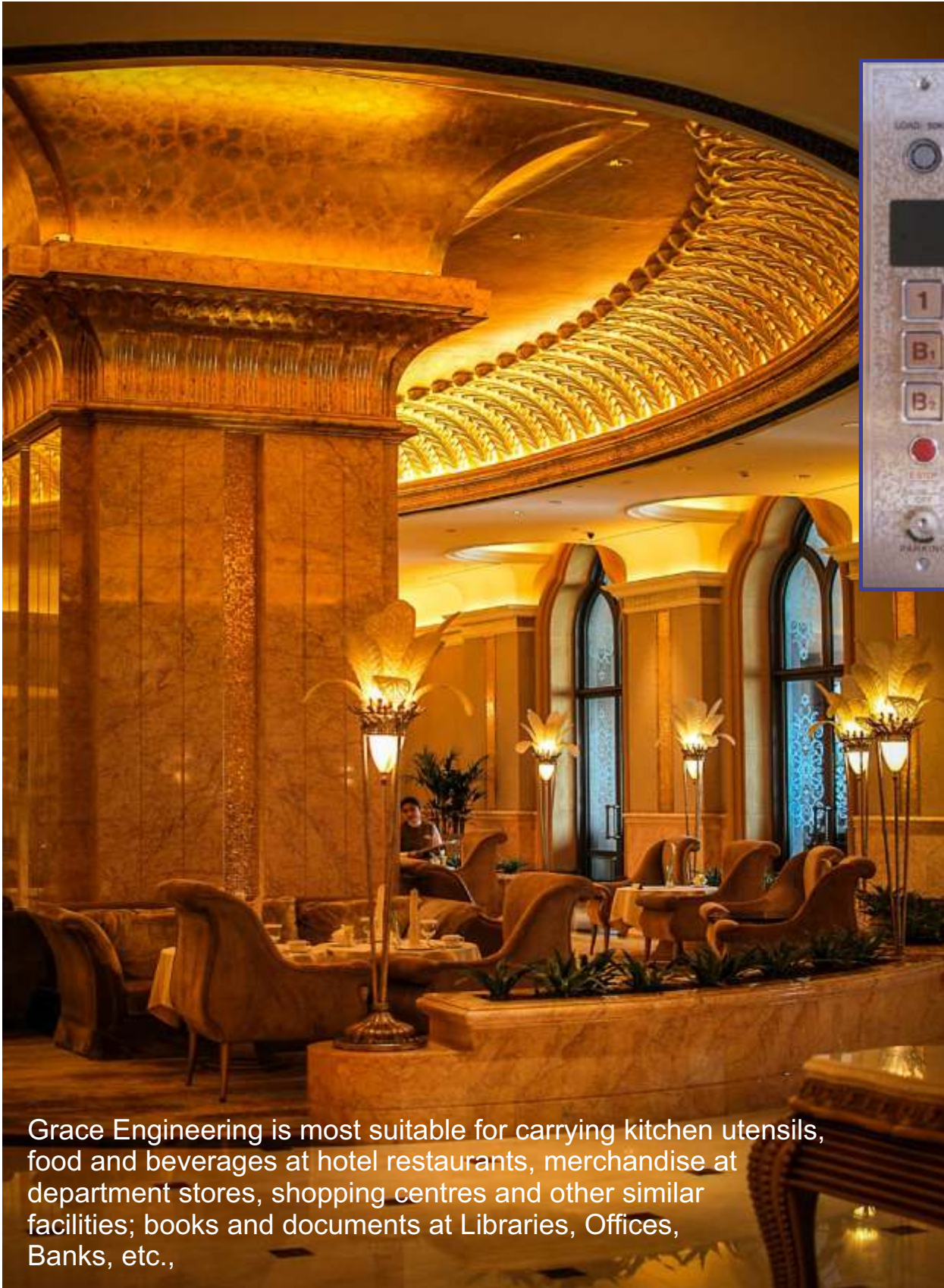




GRACE ENGINEERING

Save your time & money

GRACE ENGINEERING



Grace Engineering is most suitable for carrying kitchen utensils, food and beverages at hotel restaurants, merchandise at department stores, shopping centres and other similar facilities; books and documents at Libraries, Offices, Banks, etc.,

GRACE ENGINEERING will give you full satisfaction at any time anywhere.

GRACE ENGINEERING



OPERATION

This system is operated by the switches installed on the operating panel at each floor. Once this system starts moving, it continues moving regardless of a call from another floor during operation, and the built - in day circuit enables the system to respond to other calls only after completing the service of the first call.



SIGNAL SYSTEM

When the **Grace Engineering** starts moving, the “in use” lamp will turn on, along with the floor button lighting of Grace Engineering. When the car reaches the destination, the buzzer rings.



DOOR SWITCH

Installed at each landing door, this switch stops operation of the box when the landing door is opened.



WORK BY OTHERS

The works below are not included in the **Grace Engineering** installation work and should be carried out by building contractors in accordance with our drawings, relevant international or local codes and regulations.



- Field electrical work involving piping between the pit and security office.
- Lead -in wire installation for power connecting to the transformer room, matching room, receiving board and lighting system inside the building, and supply of receiving board.
- Cinder concrete work on the floor of the machine room for piping required for the installation of the **Grace Engineering**, and finishing work.
- Earth work and lighting arrester installation.
- Construction of machine room and hoistway, and fishing work on the outside of the landing door.
- Free supply of construction water and electricity.

FLOOR TYPE



The Floor type **Grace Engineering** is installed on the same horizontal level with the floor of the passage way to facilitate carriage of cargoes which are normally carried on handcarts.

This type is very convenient because it is easy to carry large cargoes like restaurant tables.



Specification

(Unit : mm)

Model	Load (kg)	Speed (m/min)	Control	Shelf	Box Size (WxDxH)	Hoistway Size/ Machine Room Size (WxD)	Door Size (WxH)	Overhead	Pit Depth
FD200-S30	200	30	Inverter	NIL	900 x 900 x 1200	1500 x 1150	900 x 1200	2800	750
FD200-T30					900 x 900 x 1200	1500 x 1200	900 x 1200	2800	750
FD300-S30	300				1000 x 1000 x 1200	1600 x 1250	1000 x 1200	2800	750
FD300-T30					1000 x 1000 x 1200	1600 x 1300	1200 x 1200	2800	750

• Door opening type : 1 Panel manual up-sliding door

• "S" : Standard type, "T" : Through type

Material

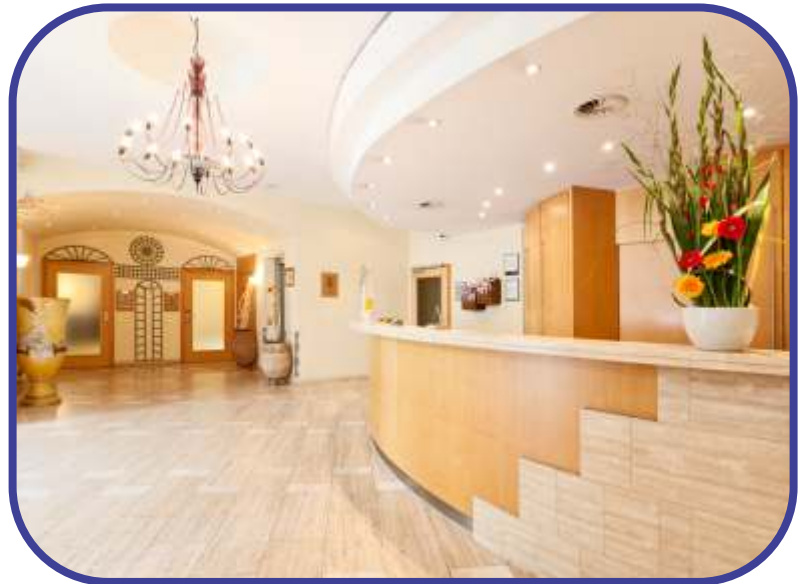
Parts		Material
Box	Wall	Stainless steel finish
	Floor	
Entrance	Car Door, Hatch Door	
	Jamb	

WINDOW TYPE



The Window type **Grace Engineering** is installed at the height of man's waist, so that customers can conveniently use the system. This type is most suited to carry books and documents at libraries, Office, Banks and similar facilities.

The system also enables users to conveniently and safely carry kitchen utensils, food and beverages at the such place such as hotel restaurants.



Specification

(Unit : mm)

Model	Load (kg)	Speed (m/min)	Control	Shelf	Box Size (WxDxH)	Hoistway Size/ Machine Room Size (WxD)	Door Size (WxH)	Overhead	Pit Depth
WD50-S30	50	30	AC-1 Speed	1-Table	450 x 450 x 750	1000 x 720	450 x 750	1500	650
WD50-T30					450 x 450 x 750	1000 x 750	450 x 750	1500	650
WD100-S30	100			1-Table	600 x 650 x 800	1150 x 880	600 x 800	1750	700
WD100-T30					600 x 650 x 800	1150 x 950	600 x 800	1750	700
WD150-S30	150			2-Table	750 x 750 x 900	1300 x 980	750 x 900	1900	700
WD150-T30					2-Table	750 x 750 x 900	1300 x 1050	750 x 900	1900

- Door opening type : 2 Panel manual Bi-parting door
- "S" : Standard type, "T" : Through type

Material

Parts		Material
Box	Wall	Stainless steel finish
	Floor	
	Shelf	
Entrance	Car Door, Hatch Door	



GRACE ENGINEERING

19-20/G, Khawaja Arcade, wahdat road, Lahore- Pakistan
Tel: + 92-42-35462507-8 37503120 **Fax:** + 92-42-37569346
Cell: 92-300-9463660 92-321-9463660
E-mail: gracetech@nexlinx.net.pk, techgrace@hotmail.com
jamshaid_ilyas@yahoo.co.uk
Fb: [jamshaid.ilyas.14](https://www.facebook.com/jamshaid.ilyas.14) **Skype:** [gracetech3](https://www.skype.com/user/gracetech3)
What's app , Wechat , Viber , 92-3009463660